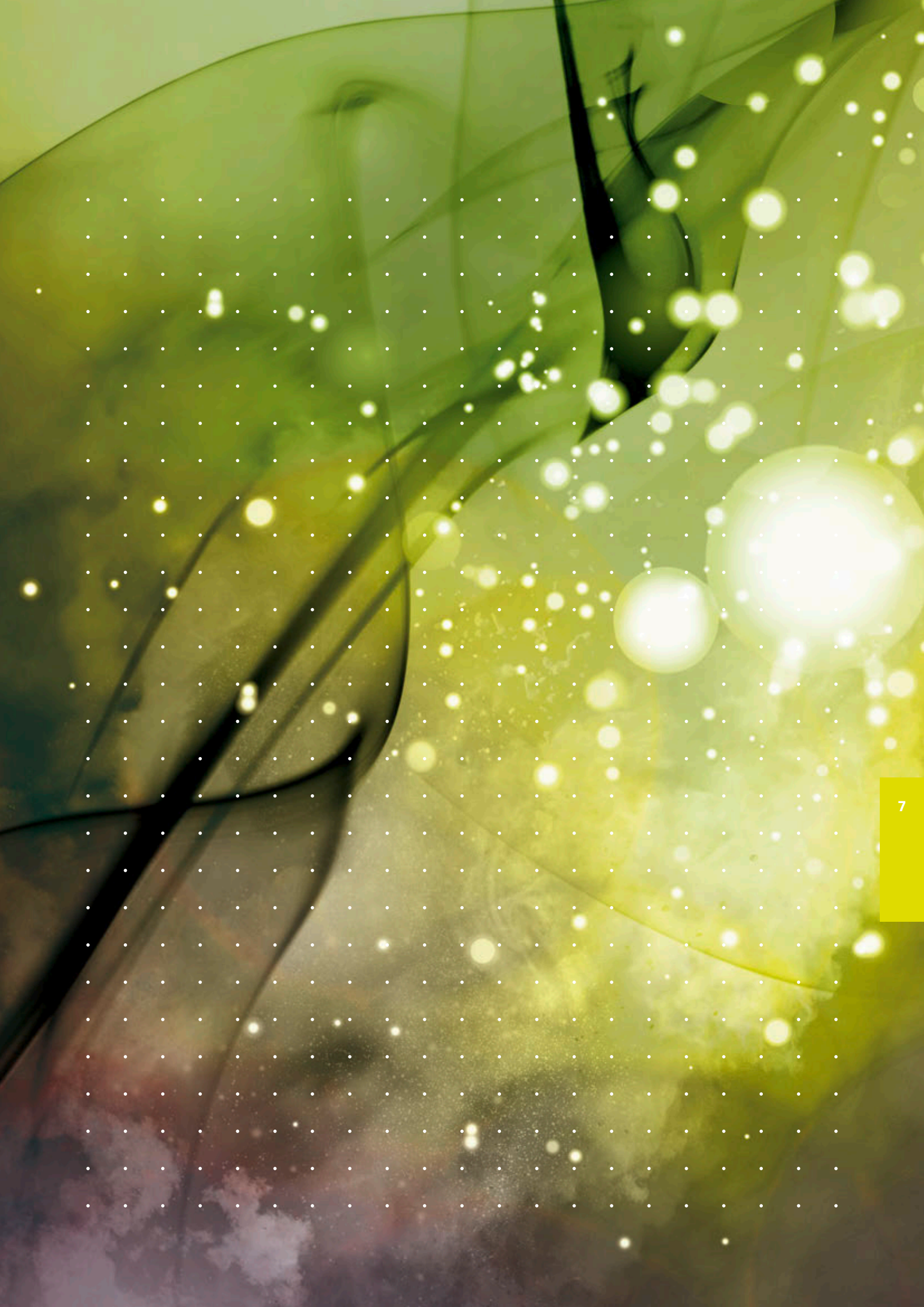


# ACCESSORIES







- 36 111
- 36 112
- 36 110
- 36 114
- 36 109
- 36 113

## MOTUS®

### Spare components MOTUS®

Type	Pack size	Weight kg/100 u.		Part no.	
16A fuse for 0.6A and 2.4A versions	3	2.8		31 567	21
20A fuse for 9A version	3	2.8		31 568	21
30A fuse for 9A version for motors with heavy starting	3	2.8		31 569	21
0.075 - 0.6A electronics module for direct/reversing starters	1	57.1		36 109	21
0.18 - 2.4A electronics module for direct/reversing starters	1	57.1		36 110	21
1.5 - 9A electronics module for direct/reversing starters	1	57.1		36 111	21
adapter for MOTUS®30Compact	1	9.3		36 113	21
adapter for MOTUS®60Classic	1	11.0		36 114	21
adapter für DIN-Tragschiene	1	12.8		36 112	21
<b>Accessories, for DIN rail model</b>					
plug connector with cable connection, 2 devices	1	7.6		36 902	21
plug connector with cable connection, 3 devices	1	9.0		36 903	21
plug connector with cable connection, 4 devices	1	10.9		36 904	21



36 209	36 230	36 216	36 909	36 906
--------	--------	--------	--------	--------

## SmartWire-DT® components

### Module for connection to SmartWire-DT®

Type	Pack size	Weight kg/100 u.	Part no.	
for all MOTUS®	1	6.5	36 209	21
for all EQUES® adapters in 60Classic up to 80A, 3 inputs, 2 outputs	1	8.0	36 230	21

### Gateway and Powerfeed

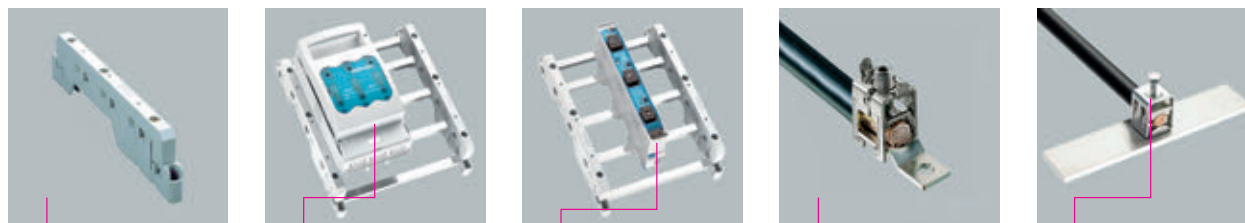
gateway Profibus DP to SmartWire-DT	1	16.0	36 216	21
gateway CANopen to SmartWire-DT	1	16.0	36 218	21
gateway EtherNet/IP to SmartWire-DT	1	16.0	36 219	21
gateway Profinet to SmartWire-DT	1	16.0	36 220	21
power feed 24V for SmartWire-DT	1	17.0	36 215	21

### Bus line and plug

ribbon cable, 8-pole, 3m long with 2 flat plugs	1	5.5	36 905	21
device plug	10	5.5	36 906	21
flat plug	10	0.5	36 907	21
network termination	1	1.0	36 908	21
bridge for bridging open sections of device plugs	1	1.0	36 912	21
coupling for flat plug	1	1.0	36 913	21
USB cable for connecting gateway to PC	1	1.0	36 911	21

### Crimping tools

pliers for device plug	1	62.0	36 909	21
pliers for flat plug (bus termination, gateway)	1	62.0	36 910	21



01 138	33 075	31 578	01 890	01 429
--------	--------	--------	--------	--------

## Busbar system special solutions

### Busbar support, 60mm-System, 3, 4, 5-pole, for VMS (GE) and AKi (Spelsberg) enclosure range

Type	Pack size	Weight kg/100 u.	Part no.	
for 3x (12, 20, 30 x 10) and 2x (12, 20, 25 x 5, 10) busbars	30	16.7	01 138	06

### Reducer, for 5mm busbars

for part no. 01 138 (3 pcs needed for a busbar support)	100	0.1	01 170	06
---	-----	-----	--------	----

### Busbar support, suitable for Striebel & John system

Type	For busbars	Pack size	Weight kg/100 u.	Part no.	
3-pole with internal screw holes	12, 20, 30 x 5, 10	10	10.0	01 603	06
1-pole, for connection to 01 603 and for mounting individually; with integrated end cover		1	4.1	01 355	06

### End cover

for busbar support 01 603	10	2.0	01 573	06
---------------------------	----	-----	--------	----

### QUADRON®60Classic, NH bus-mounting fuse switch disconnecter, top/bottom connection, 3-pole with short connection module for 5-pole busbar systems and distribution boards

Type	Rated current	Size	Pack size	Weight kg/100 u.	Part no.	
box terminal	160A	NH00	1	100.0	33 075	09
connection screw M8	160A	NH00	1	100.0	33 079	09
connection screw M10	250A	NH1	1	357.0	33 194	09

### Cover frame

Type	Pack size	Weight kg/100 u.	Part no.	
for ISO enclosure type VMS	10	16.6	01 139	06

### Reserve section cover, for use with cover frame 01 139 only

54mm wide, pitch 3 x 18mm	10	4.5	79 738	06
variable 36 - 64mm with 2 pieces	10	3.2	79 859	06

### Connector latch with brace terminal, for connecting equipment

Busbars	For use up to max.	Pack size	Weight kg/100 u.	Part no.	
for flat busbars up to 30 x 20	630A	3	32.3	01 888	07
for Cu and Al conductors 150 - 300mm <sup>2</sup> , rm, sm, f	600A	3	36.6	01 890	07

\* not maintenance-free if aluminium conductors are used (see page 8/2)

### FIBUS®, universal conductor terminal for drilled flat busbars

16 - 240mm <sup>2</sup>	630A	3	44.0	01 429	07
max. 350A current carrying capacity of the terminal point with aluminium conductor					





05 800

05 873

## Insulators

### Insulator, with female thread

Total height mm	Female thread both sides	Length across flats	Rated voltage	Pack size	Weight kg/100 u.	Part no.
20	M6	17	600V	100	1.2	05 779 06
30	M6	30	1500V	20	5.4	05 780 06
30	M8	30	1500V	20	5.3	05 792 06
35	M6	32	1500V	20	7.0	05 781 06
35	M8	32	1500V	20	7.2	05 782 06
40	M8	40	2000V	20	10.2	05 783 06
40	M10	40	2000V	20	10.8	05 784 06
40	M12	40	2000V	20	11.8	05 791 06
45	M8	46	2000V	20	14.8	05 786 06
45	M10	46	2000V	20	15.3	05 787 06
50	M8	36	2000V	20	10.9	05 790 06
50	M10	36	2000V	20	12.2	05 788 06
60	M10	40	3000V	20	16.2	05 789 06

### Insulator, with stud bolt and female thread

30	M6	30	1500V	20	5.3	05 800 06
35	M6	32	1500V	20	6.0	05 801 06
35	M8	32	1500V	20	8.2	05 802 06



01 127	01 114	01 928	08 824	08 825	01 120	01 119
--------	--------	--------	--------	--------	--------	--------

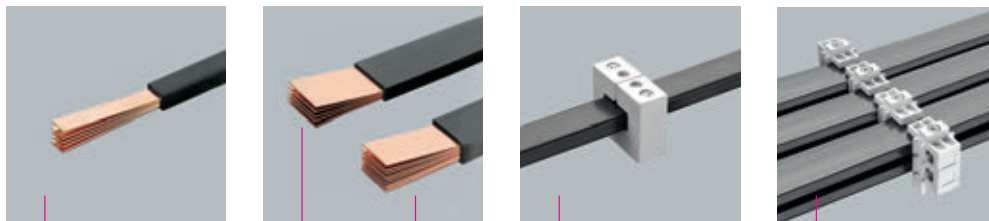
<b>PE and N busbar, rating 63A, self-locking</b>						
Connection mm <sup>2</sup>	Number of contact positions	Dimensions L x W x D	Pack size	Weight kg/100 u.		Part no.
10	8	52 x 9 x 6.5	100	2.2		01 126 06
	12	78 x 9 x 6.5	100	3.2		01 127 06
	16	104 x 9 x 6.5	100	4.3		01 128 06
	24	156 x 9 x 6.5	50	6.7		01 129 06
	151	1000 x 9 x 6.5	1	43.0		01 130 06
<b>Terminal</b>						
35	suitable for PE and N busbars 01 126 - 01 130		100	1.4		01 114 07
<b>PE and N busbar, with terminal clamps, rating 63A, self-locking</b>						
Number of terminal clamps incoming 10mm <sup>2</sup>	Number of contact points outgoing 10mm <sup>2</sup>	Dimensions L x W x D	Pack size	Weight kg/100 u.		Part no.
without terminal clamp	6	62 x 9 x 6.5	100	2.5		01 926 06
1 terminal clamp	12	124 x 9 x 6.5	50	5.5		01 927 06
4 terminal clamps	18	187 x 9 x 6.5	60	9.6		01 928 06
3 terminal clamps	24	249 x 9 x 6.5	50	11.5		01 929 06
4 terminal clamps	30	312 x 9 x 6.5	50	16.7		01 930 06
5 terminal clamps	36	374 x 9 x 6.5	100	17.6		01 931 06
15 terminal clamps	96	1000 x 9 x 6.5	1	48.0		01 932 06
for a 10mm <sup>2</sup> incoming connection, the terminal clamp must be rotated						
<b>Terminal clamp</b>						
Connection mm <sup>2</sup>	Type		Pack size	Weight kg/100 u.		Part no.
25	suitable for PE and N busbar 01 932		100	0.3		08 824 06
<b>Clip-on mounting, for 35mm mounting rail DIN EN 60 715</b>						
Type			Pack size	Weight kg/100 u.		Part no.
suitable for PE and N busbars 01 126 - 01 129 and 01 926 - 01 932			100	0.2		08 825 06
<b>Terminal support, for PE and N busbars</b>						
for screw mounting			50	1.4		01 120 06
for clip-on mounting			50	1.6		01 121 06
for screw mounting			50	0.1		01 119 06



01 144	03 213	03 657	03 668
--------	--------	--------	--------

Insulated PE and N terminal						
Rated current	Connection	Type	Pack size	Weight		Part no.
				kg/100 u.		
63A	*	7 x 10mm <sup>2</sup>	neutral (blue)	50	2.7	01 143 06
63A	*	7 x 10mm <sup>2</sup>	earth (green/yellow)	50	2.7	01 144 06
63A	**	7 x 10mm <sup>2</sup>	neutral (blue)	50	2.9	01 257 06
63A	**	7 x 10mm <sup>2</sup>	earth (green/yellow)	50	2.9	01 258 06
* for fixing to flat busbars 12 x 2mm						
** for clip-on mounting						
Connecting terminal						
160A	70mm <sup>2</sup> (clamp on both sides)	60mm		10	9.1	03 193 10
		125mm		10	14.6	03 173 10
250A	120mm <sup>2</sup> (screw M10 on both sides)	100mm		10	16.8	03 195 10
		200mm		10	30.6	03 196 10
630A	240mm <sup>2</sup> (screw M12 on both sides)	100mm		10	25.6	03 197 10
		200mm		10	42.0	03 198 10
Neutral conductor, disconnectable, screw-on and clip-on mounting						
63A	tunnel terminal			50	2.6	05 188 10
Neutral conductor, disconnectable, screw-on mounting						
160A	clamp on both sides	120mm		10	19.2	03 668 10
250A	screw on both sides	120mm		10	19.5	03 657 10
400A	screw on both sides	200mm		3	58.9	03 757 10
630A	screw on both sides	200mm		3	58.9	03 213 10
Label, self-adhesive, Ø 15mm						
PE	Colour: green-yellow			200	0.1	78 442 06
N	Colour: blue			200	0.1	78 443 06
PEN	Colour: green-yellow / blue			200	0.1	78 447 06





01 196

01 612

01 613

01 298

01 299

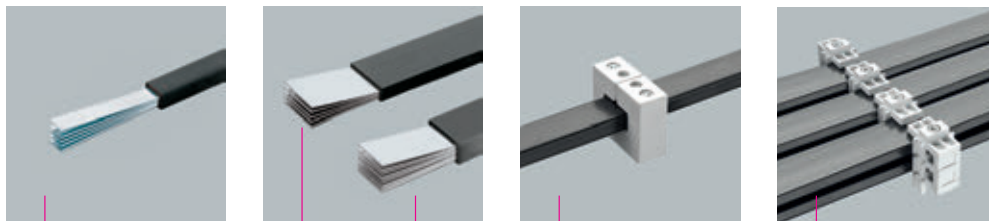
### Laminated copper busbars, plain, insulated (105°C), length 2m

Dimensions	Rated current	Cross section	Pack size	Weight *		Part no.	
	50K	mm <sup>2</sup>		kg/100 u.			
3 x 9 x 0.8	162A	21.6	1	40.4		01 054	06
6 x 9 x 0.8	240A	43.2	1	80.6		01 194	06
4 x 15.5 x 0.8	279A	49.6	1	92.8		01 196	06
6 x 15.5 x 0.8	350A	74.4	1	139.2		01 035	06
10 x 15.5 x 0.8	470A	124	1	232.0		01 583	06
3 x 20 x 1	326A	60	1	112.4		01 027	06
6 x 20 x 1	477A	120	1	225.0		01 028	06
10 x 20 x 1	640A	200	1	375.0		01 029	06
4 x 24 x 1	438A	96	1	180.0		01 253	06
5 x 24 x 1	495A	120	1	225.0		01 611	06
6 x 24 x 1	547A	144	1	270.0		01 255	06
8 x 24 x 1	641A	192	1	360.0		01 323	06
10 x 24 x 1	727A	240	1	450.0		01 184	06
5 x 32 x 1	617A	160	1	299.0		01 612	06
10 x 32 x 1	894A	320	1	598.0		01 613	06
5 x 40 x 1	736A	200	1	373.0		01 614	06
6 x 40 x 1	809A	240	1	447.6		01 256	06
10 x 40 x 1	1053A	400	1	746.0		01 615	06
5 x 50 x 1	880A	250	1	466.0		01 060	06
8 x 50 x 1	1114A	400	1	746.0		01 343	06
10 x 50 x 1	1244A	500	1	932.0		01 509	06
5 x 63 x 1	1061A	315	1	590.0		01 324	06
10 x 63 x 1	1481A	630	1	1180.0		01 510	06
10 x 80 x 1	1777A	800	1	1490.0		01 061	06
10 x 100 x 1	2110A	1000	1	1870.0		01 273	06

\* the weight specified is the pure copper weight, it does not include the weight of the insulation.

### Holder, for laminated busbars

Type	Pack size	Weight		Part no.	
		kg/100 u.			
for 1x lam. Cu of 6 x 15.5 x 0.8 to 10 x 63 x 1	3	11.3		01 298	06
for multiple fastening for lam. Cu of 5 x 40 x 1 to 10 x 63 x 1 mounting on standard C-rail	4	16.6		01 299	06



01 089	01 095	01 096	01 298	01 299
--------	--------	--------	--------	--------

Laminated copper busbars, tin-plated, insulated (105°C), length 2m						
Dimensions	Rated current	Cross section	Pack size	Weight *		Part no.
	50K	mm <sup>2</sup>		kg/100 u.		
6 x 9 x 0.8	240A	43.2	1	80.6		01 084
4 x 15.5 x 0.8	279A	49.6	1	92.8		01 089
6 x 15.5 x 0.8	350A	74.4	1	139.2		01 090
10 x 15.5 x 0.8	470A	124	1	232.0		01 091
6 x 20 x 1	477A	120	1	225.0		01 063
10 x 20 x 1	640A	200	1	375.0		01 064
5 x 24 x 1	494A	120	1	225.0		01 075
10 x 24 x 1	727A	240	1	450.0		01 076
5 x 32 x 1	617A	160	1	299.0		01 095
10 x 32 x 1	894A	320	1	598.0		01 096
5 x 40 x 1	736A	200	1	373.0		01 097
10 x 40 x 1	1053A	400	1	746.0		01 099
5 x 50 x 1	880A	250	1	466.0		01 112
10 x 50 x 1	1244A	500	1	932.0		01 113
10 x 63 x 1	1481A	630	1	1180.0		01 123

\* the weight specified is the pure copper weight, it does not include the weight of the insulation.

Holder, for laminated busbars						
Type	Pack size	Weight		Part no.		
		kg/100 u.				
for 1x lam. Cu of 6 x 15.5 x 0.8 to 10 x 63 x 1	3	11.3		01 298		06
for multiple fastening for lam. Cu of 5 x 40 x 1 to 10 x 63 x 1	4	16.6		01 299		06
mounting on standard C-rail						



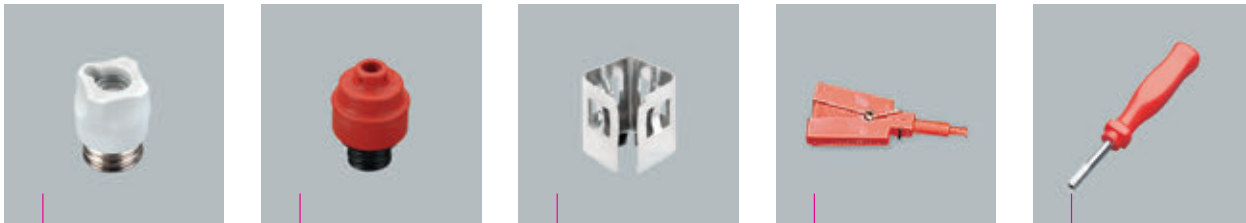
01 694	01 718	01 727
--------	--------	--------

**D0 fuses**  
to DIN VDE 0636-3 / IEC / EN 60269-3

gG (gL) fuse link								
Size	Rated current	Rated voltage	Rated breaking capacity	Pack size	Weight kg/100 u.		Part no.	
D01	2A	400V AC / 250V DC	50kA AC / 8kA DC	10	0.6		<b>01 685</b>	03
	4A			10	0.6		<b>01 686</b>	03
	6A			10	0.6		<b>01 687</b>	03
	10A			10	0.6		<b>01 688</b>	03
	16A			10	0.7		<b>01 689</b>	03
D02	20A	400V AC / 250V DC	50kA AC / 8kA DC	10	1.2		<b>01 690</b>	03
	25A			10	1.3		<b>01 691</b>	03
	35A			10	1.3		<b>01 692</b>	03
	50A			10	1.5		<b>01 693</b>	03
	63A			10	1.5		<b>01 694</b>	03

Ferrule gauge ring for E14							
Size	Rated current	Pack size	Weight kg/100 u.		Part no.		
D01	2A	50	0.1		<b>01 715</b>		03
	4A	50	0.1		<b>01 716</b>		03
	6A	50	0.1		<b>01 717</b>		03
	10A	50	0.1		<b>01 718</b>		03

Ferrule gauge piece for E18							
Size	Rated current	Pack size	Weight kg/100 u.		Part no.		
D01	2A	50	0.1		<b>01 724</b>		03
	4A	50	0.1		<b>01 725</b>		03
	6A	50	0.1		<b>01 726</b>		03
	10A	50	0.1		<b>01 727</b>		03
	16A	50	0.1		<b>01 728</b>		03
D02	20A	50	0.1		<b>01 719</b>		03
	25A	50	0.1		<b>01 720</b>		03
	35A	50	0.1		<b>01 721</b>		03
	50A	50	0.1		<b>01 722</b>		03



31 006	31 909	01 729	01 730	31 913
--------	--------	--------	--------	--------

## D0 fuses

to DIN VDE 0636-3 / IEC / EN 60269-3

### Screw cap, 400V AC / 250V DC

Size	Type	Pack size	Weight kg/100 u.	Part no.	
D01 / E14	porcelain	20	1.9	<b>01 103</b>	03
D01 / E14	plastic	20	1.2	<b>31 005</b>	03
D02 / E18	porcelain	20	1.8	<b>01 104</b>	03
D02 / E18	plastic	20	1.3	<b>31 006</b>	03
D01 / E18	*	20	1.4	<b>31 104</b>	03

\* with reducing piece for D01

### Retaining cap

D01 / E14	industrial	36	1.1	<b>31 909</b>	03
	utility	36	1.1	<b>31 908</b>	03
D02 / E18	industrial	36	1.1	<b>31 910</b>	03
	utility	36	1.1	<b>31 904</b>	03

### Special retaining spring

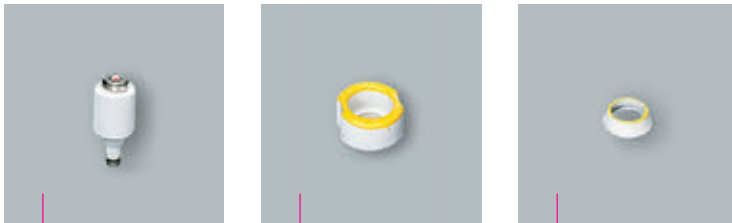
Size	Rated current	Pack size	Weight kg/100 u.	Part no.	
D01 / E18	2 - 16A	50	0.1	<b>01 729</b>	03

### Gauge ring tool

Size	Pack size	Weight kg/100 u.	Part no.	
D01 - D03	1	2.8	<b>01 730</b>	03

### Special key for retaining cap

Size	Type	Pack size	Weight kg/100 u.	Part no.	
D / D0	industrial	1	3.6	<b>31 913</b>	03



01 676	01 706	01 547
--------	--------	--------

## D fuses

to DIN VDE 0636-3 / IEC / EN 60269-3

### gG (gL) fuse link

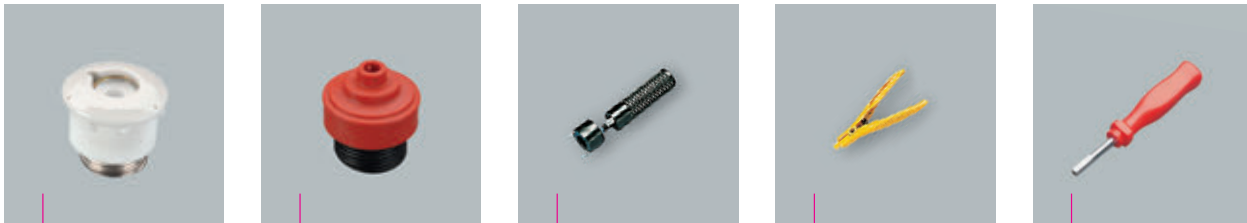
Size	Rated current	Rated voltage	Rated breaking capacity	Pack size	Weight kg/100 u.	Part no.	
E27	2A	500V AC / DC	50kA	5	2.7	01 670	03
	4A			5	2.8	01 671	03
	6A			5	2.8	01 672	03
	10A			5	2.8	01 673	03
	16A			5	2.9	01 674	03
	20A			5	3.1	01 675	03
	25A			5	3.2	01 676	03
E33	35A	500V AC / DC	50kA	5	4.8	01 677	03
	50A			5	5.0	01 678	03
	63A			5	5.2	01 679	03

### Screw-in gauge ring

Size	Rated current	Pack size	Weight kg/100 u.	Part no.	
E27 / E33	2A	25	1.3	01 741	03
	4A	25	1.2	01 701	03
	6A	25	1.2	01 702	03
	10A	25	1.2	01 703	03
	16A	25	1.2	01 704	03
	20A	25	1.2	01 705	03
	25A	25	1.2	01 706	03
E33	35A	25	2.0	01 707	03
	50A	25	2.0	01 708	03
	63A	25	2.0	01 709	03

### Gauge ring

E27	2A	50	0.4	01 541	03
	4A	50	0.4	01 542	03
	6A	50	0.4	01 543	03
	10A	50	0.4	01 544	03
	16A	50	0.4	01 545	03
	20A	50	0.4	01 546	03
	25A	50	0.4	01 547	03
E33	35A	50	0.4	01 548	03
	50A	50	0.4	01 549	03
	63A	50	0.4	01 550	03



01 098	31 911	01 998	01 059	31 913
--------	--------	--------	--------	--------

**D fuses**  
to DIN VDE 0636-3 / IEC / EN 60269-3

**Screw cap, 500V AC / DC**

Size	Type	Pack size	Weight	Part no.
			kg/100 u.	
E27	porcelain	20	4.8	01 098 03
	plastic	20	2.8	31 098 03
E33	porcelain	20	7.9	01 100 03
	plastic	20	4.8	31 100 03

**Retaining cap**

E27	industrial	20	1.7	31 911 03
	utility	20	1.7	31 905 03
E33	industrial	10	2.6	31 912 03
	utility	10	2.6	31 906 03

**Gauge screw key**

Size	Pack size	Weight	Part no.
		kg/100 u.	
E27 / E33	1	4.7	01 998 03

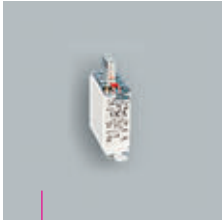
**Gauge ring key**

E27 / E33	1	3.7	01 059 03
-----------	---	-----	-----------

**Special key for retaining cap**

Size	Type	Pack size	Weight	Part no.
			kg/100 u.	
D / D0	industrial	1	3.6	31 913 03





03 530

03 162

## NH fuses

to DIN VDE 0636-2 / IEC / EN 60269-2

### gG (gL) fuse link

Size	Rated voltage AC	Rated voltage DC	Rated current	Pack size	Weight kg/100 u.	Part no.	
NH000	400V 500V	250V	125A	3	12.2	03 243	10
			6A	3	12.2	03 523	10
	10A		3	12.2	03 524	10	
	16A		3	12.2	03 525	10	
	20A		3	12.2	03 526	10	
	25A		3	12.2	03 527	10	
	35A		3	12.2	03 528	10	
	50A		3	12.2	03 529	10	
	63A		3	12.2	03 530	10	
	80A		3	12.2	03 531	10	
	100A		3	12.2	03 532	10	
NH00	440V	440V	125A	3	18.3	03 533	10
			160A	3	18.3	03 534	10
	690V	250V	6A	3	12.7	03 908	10
			10A	3	12.7	03 909	10
			16A	3	12.7	03 910	10
			20A	3	12.7	03 911	10
			25A	3	12.7	03 912	10
			32A	3	12.7	03 913	10
			35A	3	12.7	03 914	10
			40A	3	12.7	03 915	10
			50A	3	12.7	03 916	10
			63A	3	12.7	03 917	10
			80A	3	19.0	03 918	10
			100A	3	20.5	03 919	10

### Cutting blade

Size	Rated current	Pack size	Weight kg/100 u.	Part no.	
NH00	160A	3	7.0	03 161	10
NH1	250A	3	14.9	03 162	10
NH2	400A	3	20.7	03 163	10
NH3	630A	3	28.0	03 164	10
NH4a	1600A	3	85.0	03 185	10

### NH universal slip-on handle

Size	Type	Pack size	Weight kg/100 u.	Part no.	
size 000 - 3	open	1	28.4	03 502	10

Size 000 NH fuses to DIN VDE 0636-2 can be used in size 00 NH fuses bases and NH switch fuse units.



03 571

## NH fuses

to DIN VDE 0636-2 / IEC / EN 60269-2

### gG / gL fuse link, 500V AC / 440V DC

Size	Rated voltage AC	Rated voltage DC	Rated current	Pack size	Weight kg/100 u.	Part no.		
NH1	500V	440V	20A	3	26.3	<b>03 550</b>	10	
			35A	3	26.3	<b>03 552</b>	10	
			50A	3	26.3	<b>03 553</b>	10	
			80A	3	26.3	<b>03 555</b>	10	
			100A	3	26.3	<b>03 556</b>	10	
			125A	3	26.3	<b>03 557</b>	10	
			160A	3	26.3	<b>03 558</b>	10	
			200A	3	26.3	<b>03 559</b>	10	
			224A	3	26.3	<b>03 560</b>	10	
			250A	3	26.3	<b>03 561</b>	10	
	690V	250V	160A	3	35.0	<b>03 929</b>	10	
			200A	3	35.0	<b>03 930</b>	10	
			250A	3	35.0	<b>03 924</b>	10	
NH2	500V	440V	50A	3	47.8	<b>03 563</b>	10	
			100A	3	47.8	<b>03 566</b>	10	
			160A	3	47.8	<b>03 568</b>	10	
			200A	3	47.8	<b>03 569</b>	10	
			224A	3	47.8	<b>03 570</b>	10	
			250A	3	47.8	<b>03 571</b>	10	
			300A	3	47.8	<b>03 572</b>	10	
			315A	3	47.8	<b>03 573</b>	10	
			250V	355A	3	47.8	<b>03 574</b>	10
				400A	3	47.8	<b>03 575</b>	10
	690V	250A		3	62.6	<b>03 942</b>	10	
		315A	3	62.6	<b>03 943</b>	10		
	NH3	500V	440V	315A	3	65.4	<b>03 577</b>	10
400A				3	65.4	<b>03 579</b>	10	
500A				3	65.4	<b>03 581</b>	10	
630A				3	65.4	<b>03 582</b>	10	
690V				400A	3	96.0	<b>03 946</b>	10
		500A		3	105.0	<b>03 947</b>	10	
NH4a		500V		440V	800A	1	260.0	<b>03 181</b>
	1000A		1		260.0	<b>03 182</b>	10	
	1250A		1		266.0	<b>03 183</b>	10	

Size 000 NH fuses to DIN VDE 0636-2 can be used in size 00 NH fuses bases and NH switch fuse units.




31 185

## Cylindrical gG fuses

Fuse link gG (gL)  
as per IEC 60269-2

Size	Rated current	Rated voltage	Rated breaking capacity	Power output	Pack size	Weight kg/100 u.	Part no.	
10 x 38	1A	500V	120kA	0.5W	10	0.6	31 008	17
	2A	500V	120kA	0.7W	10	0.6	31 182	17
	4A	500V	120kA	0.8W	10	0.6	31 183	17
	6A	500V	120kA	0.9W	10	0.6	31 184	17
	8A	500V	120kA	0.9W	10	0.6	31 009	17
	10A	500V	120kA	1.3W	10	0.6	31 185	17
	12A	500V	120kA	1.3W	10	0.6	31 010	17
	16A	500V	120kA	1.9W	10	0.6	31 186	17
	20A	500V	120kA	2.3W	10	0.6	31 187	17
	25A	500V	120kA	2.8W	10	0.6	31 188	17
	32A	400V	120kA	3.0W	10	0.6	31 189	17
14 x 51	2A	690V	80kA	0.8W	10	1.9	31 011	17
	6A	690V	80kA	1.0W	10	1.9	31 017	17
	10A	690V	120kA	1.8W	10	1.9	31 190	17
	16A	690V	80kA	2.5W	10	1.9	31 191	17
	20A	690V	80kA	3.0W	10	1.9	31 192	17
	25A	690V	80kA	3.5W	10	1.9	31 193	17
	32A	500V	80kA	3.8W	10	1.9	31 194	17
	40A	500V	80kA	4.4W	10	1.9	31 195	17
	50A	400V	120kA	4.7W	10	1.9	31 196	17
22 x 58	32A	690V	80kA	4.3W	10	5.0	31 198	17
	40A	690V	80kA	5.1W	10	5.0	31 199	17
	50A	690V	80kA	5.5W	10	5.0	31 200	17
	63A	690V	80kA	6.7W	10	5.0	31 201	17
	80A	500V	120kA	8.0W	10	5.0	31 202	17
	100A	500V	120kA	9.0W	10	5.0	31 203	17
	125A	400V	120kA	12.5W	10	5.0	31 204	17




31 366

## Cylindrical gG fuses

Fuse link gG (gL), with striker  
as per IEC 60269-2

Size	Rated current	Rated voltage	Rated breaking capacity	Power output	Pack size	Weight kg/100 u.	Part no.	
14 x 51	6A	500V	80kA	1.1W	10	2.0	31 366	17
	10A	500V	80kA	1.3W	10	2.0	31 368	17
	16A	500V	80kA	2.0W	10	2.0	31 370	17
	20A	500V	80kA	2.5W	10	2.0	31 371	17
	25A	500V	80kA	3.3W	10	2.0	31 372	17
	32A	500V	120kA	3.5W	10	2.0	31 373	17
	40A	500V	120kA	4.8W	10	2.0	31 374	17
22 x 58	50A	690V	80kA	5.2W	10	5.2	31 385	17
	63A	500V	80kA	6.9W	10	5.2	31 386	17
	80A	500V	80kA	7.8W	10	5.2	31 387	17




31 209

## Cylindrical gR fuses

### Fuse link gR as per IEC 60269-4

Size	Rated current	Rated voltage	Rated breaking capacity	Power output	Pack size	Weight kg/100 u.		Part no.	
10 x 38	1A	690V	200kA	0.9W	10	0.6		31 205	17
	2A	690V	200kA	1.0W	10	0.6		31 206	17
	4A	690V	200kA	1.1W	10	0.6		31 207	17
	6A	690V	200kA	1.6W	10	0.6		31 208	17
	10A	690V	200kA	2.1W	10	0.6		31 209	17
	12A	690V	200kA	3.1W	10	0.6		31 210	17
	16A	690V	200kA	4.4W	10	0.6		31 211	17
	20A	690V	200kA	5.8W	10	0.6		31 212	17
	25A	690V	200kA	6.8W	10	0.6		31 213	17
14 x 51	30A	690V	200kA	8.2W	10	0.6		31 214	17
	10A	690V	200kA	2.6W	10	1.9		31 215	17
	1A	690V	200kA	4.7W	10	1.9		31 216	17
	20A	690V	200kA	6.0W	10	1.9		31 217	17
	32A	690V	200kA	9.5W	10	1.9		31 219	17
	40A	690V	200kA	10.0W	10	1.9		31 220	17
22 x 58	50A	690V	200kA	12.0W	10	1.9		31 221	17
	40A	690V	200kA	12.0W	10	5.0		31 225	17
	50A	690V	200kA	15.0W	10	5.0		31 226	17
	63A	690V	200kA	16.0W	10	5.0		31 227	17
	80A	690V	200kA	18.0W	10	5.0		31 228	17
	100A	690V	200kA	19.0W	10	5.0		31 229	17



31 544

31 558

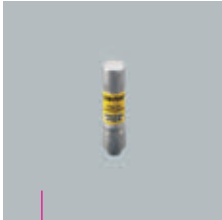
## Cylindrical gPV fuses

Fuse link gPV,  
as per IEC/EN 60 269-6, for photovoltaic applications

Size	Rated current	Rated voltage DC	Rated breaking capacity	Power output	Pack size	kg/100 u.	PG		
10 x 38	8A	1000V	30kA	1.6W	10	0.6		31 543	17
	10A	1000V	30kA	2.0W	10	0.6		31 544	17
	12A	1000V	30kA	2.4W	10	0.6		31 545	17
	16A	1000V	30kA	2.1W	10	0.6		31 546	17
	20A	1000V	30kA	2.5W	10	0.6		31 547	17
14 x 85	16A	1100V	30kA	3.8W	20	2.7		31 560	17
	20A	1100V	30kA	4.7W	20	2.7		31 559	17
	25A	1000V	30kA	5.9W	20	2.7		31 558	17

delivery on request



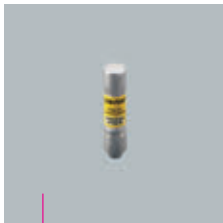



31 252

## Cylindrical class CC fuses

### Fuse link class CC time delay as per UL 248-4

Size	Rated current	Rated voltage	Rated breaking capacity	Pack size	Weight kg/100 u.		Part no.	
class CC	0.5A	600V	200kA	10	0.8		31 394	17
	1A	600V	200kA	10	0.8		31 244	17
	1.5A	600V	200kA	10	0.8		31 395	17
	2A	600V	200kA	10	0.8		31 245	17
	2.5A	600V	200kA	10	0.8		31 396	17
	3A	600V	200kA	10	0.8		31 397	17
	4A	600V	200kA	10	0.8		31 246	17
	5A	600V	200kA	10	0.8		31 398	17
	6A	600V	200kA	10	0.8		31 247	17
	8A	600V	200kA	10	0.8		31 399	17
	10A	600V	200kA	10	0.8		31 248	17
	12A	600V	200kA	10	0.8		31 400	17
	15A	600V	200kA	10	0.8		31 249	17
	20A	600V	200kA	10	0.8		31 250	17
	25A	600V	200kA	10	0.8		31 251	17
30A	600V	200kA	10	0.8		31 252	17	



31 241

## Cylindrical class CC fuses

Fuse link class CC  
fast acting  
as per UL 248-4

Size	Rated current	Rated voltage	Rated breaking capacity	Pack size	Weight kg/100 u.	Part no.	
class CC	0.5A	600V	200kA	10	0.8	31 401	17
	1A	600V	200kA	10	0.8	31 235	17
	2A	600V	200kA	10	0.8	31 236	17
	3A	600V	200kA	10	0.8	31 404	17
	4A	600V	200kA	10	0.8	31 237	17
	5A	600V	200kA	10	0.8	31 405	17
	6A	600V	200kA	10	0.8	31 238	17
	8A	600V	200kA	10	0.8	31 406	17
	10A	600V	200kA	10	0.8	31 239	17
	12A	600V	200kA	10	0.8	31 407	17
	15A	600V	200kA	10	0.8	31 240	17
	20A	600V	200kA	10	0.8	31 241	17
	25A	600V	200kA	10	0.8	31 242	17
	30A	600V	200kA	10	0.8	31 243	17



31 353	31 363	03 231	03 236
--------	--------	--------	--------

## Cylindrical class J fuses

### Fuse link class J time delay as per UL 248-8

Size	Rated current	Rated voltage	Rated breaking capacity	Pack size	Weight kg/100 u.	Part no.	
class J, 21 x 57	1A	600V	200kA	10	5.0	31 333	16
	2A	600V	200kA	10	5.0	31 338	16
	3A	600V	200kA	10	5.0	31 342	16
	4A	600V	200kA	10	5.0	31 345	16
	6A	600V	200kA	10	5.0	31 349	16
	8A	600V	200kA	10	5.0	31 351	16
	10A	600V	200kA	10	5.0	31 353	16
	12A	600V	200kA	10	5.0	31 354	16
	1A	600V	200kA	10	5.0	31 355	16
	20A	600V	200kA	10	5.0	31 357	16
	25A	600V	200kA	10	5.0	31 358	16
	30A	600V	200kA	10	5.0	31 359	16
	class J, 27 x 60	35A	600V	200kA	10	8.5	31 360
40A		600V	200kA	10	8.5	31 361	16
45A		600V	200kA	10	8.5	31 362	16
50A		600V	200kA	10	8.5	31 363	16
60A		600V	200kA	10	8.5	31 364	16
class J, 29 x 118	70A	600V	200kA	1	14.5	03 228	16
	80A	600V	200kA	1	14.5	03 229	16
	90A	600V	200kA	1	14.5	03 230	16
	100A	600V	200kA	1	14.5	03 231	16
class J, 41 x 146	125A	600V	200kA	1	35.5	03 233	16
	150A	600V	200kA	1	35.5	03 234	16
	175A	600V	200kA	1	35.5	03 235	16
	200A	600V	200kA	1	35.5	03 236	16
class J, 54 x 181	250A	600V	200kA	1	67.0	03 238	16
	300A	600V	200kA	1	67.0	03 239	16
	350A	600V	200kA	1	67.0	03 240	16
	400A	600V	200kA	1	67.0	03 241	16



31 323	31 514	03 215	03 220
--------	--------	--------	--------

## Cylindrical class J fuses

### Fuse link class J fast acting as per UL 248-8

Size	Rated current	Rated voltage	Rated breaking capacity	Pack size	Weight kg/100 u.	Part no.	
class J, 21 x 57	10A	600V	200kA	10	5.0	31 323	16
	15A	600V	200kA	10	5.0	31 324	16
	20A	600V	200kA	10	5.0	31 325	16
	25A	600V	200kA	10	5.0	31 326	16
	30A	600V	200kA	10	5.0	31 327	16
class J, 27 x 60	35A	600V	200kA	10	8.5	31 511	16
	40A	600V	200kA	10	8.5	31 512	16
	50A	600V	200kA	10	8.5	31 514	16
	60A	600V	200kA	10	8.5	31 515	16
class J, 29 x 118	70A	600V	200kA	1	14.5	03 214	16
	80A	600V	200kA	1	14.5	03 215	16
	100A	600V	200kA	1	14.5	03 217	16
class J, 41 x 146	125A	600V	200kA	1	35.0	03 219	16
	150A	600V	200kA	1	35.5	03 220	16
	175A	600V	200kA	1	38.2	03 221	16
	200A	600V	200kA	1	35.5	03 222	16
class J, 54 x 181	250A	600V	200kA	1	67.0	03 224	16
	300A	600V	200kA	1	67.0	03 225	16
	350A	600V	200kA	1	67.0	03 226	16
	400A	600V	200kA	1	67.0	03 227	16